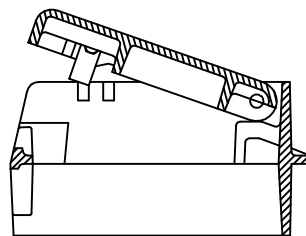


VIEW ON Y

ROAD RETAINING BAR  
25x 35 x 550  
187120 (HMA 74)



SECTION ON X-X

**WATERFALL 187067  
HALF BATTER KERB PROFILE**

SAP CODE	STANCAD CODE	BS EN124 CLASS	CLEAR OPENING (A x B)	OVER BASE (C x D)	DEPTH (E)	LOCKING	DEBRIS GRID	TOTAL MASS kg.	PALLET QUANTITY
187067	HK03 1	C250	400 x 250	550 x 360	190	YES	NO	43	18

**COPYRIGHT and DESIGN RIGHT**  
This drawing is the exclusive property of Saint Gobain PAM UK and is confidential and must not be reproduced or disclosed to any third party without written consent. It must be used only for the purpose for which it has been issued and is returnable on request.

Produced at Holwell  
Works in UK



CLASS	APPLICATION	GROUP		DRAWN	DATE FIRST ISSUED	DRAWING TITLE	ISSUE
EN124 C250	 	3		R.HALL/KA	MAY '99	WATERFALL 400 x 250	12
				SCALE NTS	DATE THIS ISSUE 26/03/14		

The information on this sketch is, to the best of our knowledge correct at the time of printing. However Saint-Gobain are constantly looking at ways of improving their products and services and therefore reserve the right to change, without prior notice, any of the data shown. Any orders placed will be subject to our Standard Conditions of Sale, available on request.