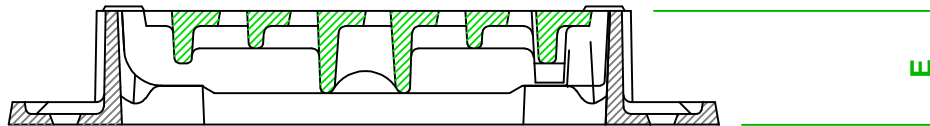


PLAN (187126)

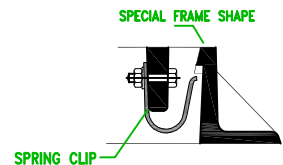


SECTION X-X (187126)

WATERFLOW PEDESTRIAN DUCTILE IRON CLASS C250 CAPTIVE HINGED GRATING & FRAME

SAP CODE STD	SAP CODE WITH SPRING CLIP LOCKING	BS EN124 CLASS	CLEAR OPENING A x B	OVER BASE C x D	FRAME DEPTH E	WATERWAY AREA cm ²	HA102 GRATING TYPE	TOTAL MASS kg	STANCAD CODE STD
187126	186862	C250	325 x 312	475 x 400	75	605	T	23	HP893 1

Spring Clip locking cannot be fitted retrospectively



COPYRIGHT and DESIGN RIGHT
 This drawing is the exclusive property of Saint Gobain PAM UK and is confidential and must not be reproduced or disclosed to any third party without written consent. It must be used only for the purpose for which it has been issued and is returnable on request.

Produced at Holwell Works in UK



CLASS	APPLICATION	GROUP	KITEMARK	DRAWN	JNP	DATE	13/10/05	DRAWING TITLE	ISSUE
EN124 C250		3		UPDATED	SPB	DATE	02/12/16	WATERFLOW C250 PEDESTRIAN	8
				CHECKED	PH	DATE	21/12/16		
				APPROVED	NS	DATE	21/12/16		

The information on this sketch is, to the best of our knowledge correct at the time of printing. However Saint-Gobain are constantly looking at ways of improving their products and services and therefore reserve the right to change, without prior notice, any of the data shown. Any orders placed will be subject to our Standard Conditions of Sale, available on request.