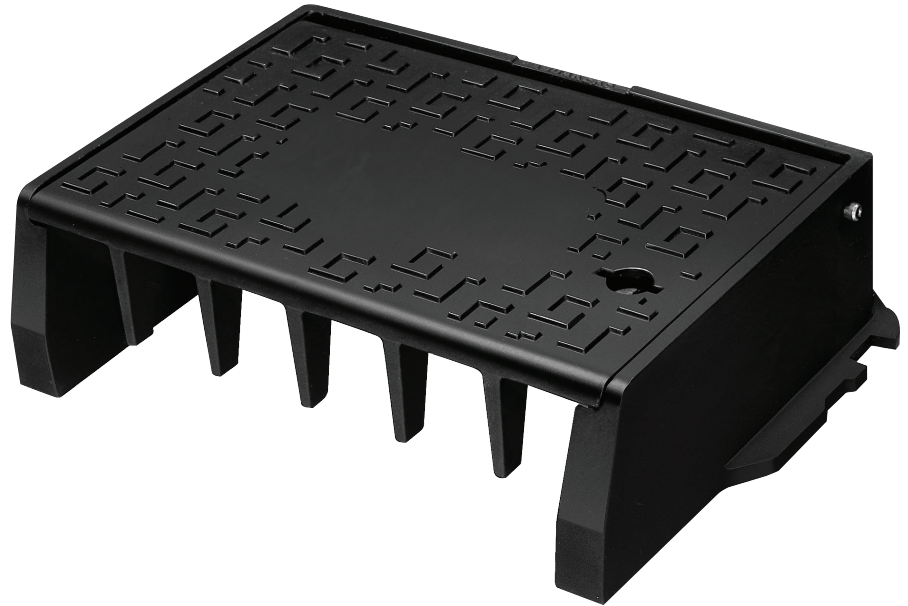


RECOMMENDED FOR USE IN:

The kerb line of carriageways carrying all types of traffic in areas subjected to high surface water run off.

Available in 12.5° half batter or 45° splay kerb profiles the Aquakerb provides efficient water clearing along the kerb line. Its single piece inspection cover is captive hinged and locked as standard for ease of use, safe operation and improved security.



HEALTH & SAFETY

To help reduce work-related injuries, an ergonomic hinged design makes opening simpler, easier and safer to access the drainage network



WATER CLEARING EFFICIENCY

An efficient water clearing capacity aids the effective removal of surface water



ACCREDITATION

Third party certified by BSI and kite marked to the requirements of BS EN 124. Compliant to the requirements of Highways England advice note HA104/09



SECURITY

A captive hinged inspection cover that is also locked as standard offers improved anti-theft and security capabilities



ROAD SAFETY

Exceeds the requirements as stated within paragraph 3.4 of Chapter 3: Design Considerations for Chamber Tops within HA104/09. The PSRV has been independently verified in accordance with the requirements and methodology stated within BS9124



PERFORMANCE

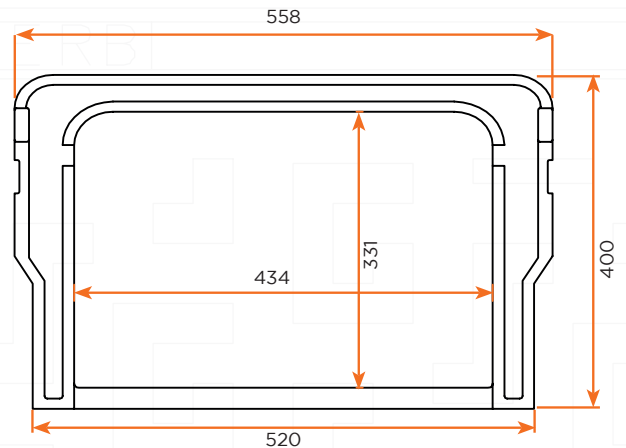
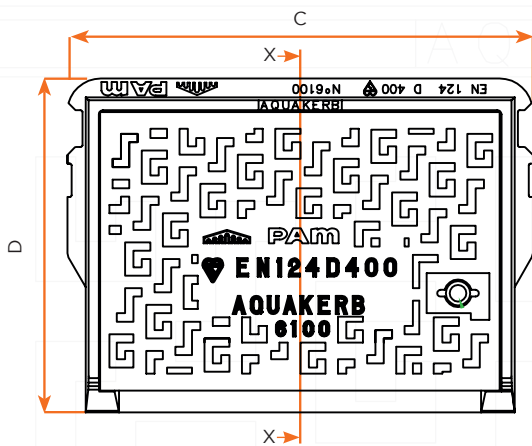
Non rock and silent in use

AQUAKERB D400 KERB DRAINAGE RANGE	ISSUE NO:	SGPUK022	DATE:	03.2018
-----------------------------------	-----------	----------	-------	---------

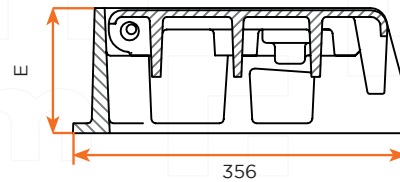
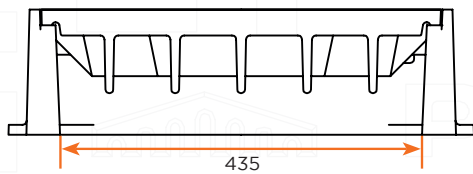
Manufactured in the UK to the highest Quality, Environmental and Health and Safety standards.

AQUAKERB D400 KERB DRAINAGE RANGE

SAP CODE	BS EN124 CLASS	KERB PROFILE	OVER BASE C x D (mm)	DEPTH E (mm)	TOTAL MASS (kg)	PALLET QUANTITIES	PREVIOUS REF.
186040	D400	12.5° HALF BATTER	558 x 400	150	45	10	C6100A
186042	D400	45° SPLAY	558 x 400	150	55	10	C6101A



OPTIONAL SUB FRAME



Can be supplied with:

- An optional road retaining bar product code 187120
- A 40mm subframe to increase the overall height to 190mm product code 186041

Can only be opened by using locking/lifting key product code 191156

Produced at Holwell Works, UK

The information on this sketch is, to the best of our knowledge correct at the time of printing. However Saint-Gobain are constantly looking at ways of improving their products and services therefore reserve the right to change without prior notice, any of the data shown. Any orders placed will be subject to our Standard Conditions of Sale, available on request.

COPYRIGHT AND DESIGN RIGHT

This drawing is the exclusive property of Saint-Gobain PAM UK and is confidential and must not be reproduced or disclosed for any third party without written consent. It must be used only for the purpose for which it has been issued and is returnable on request.