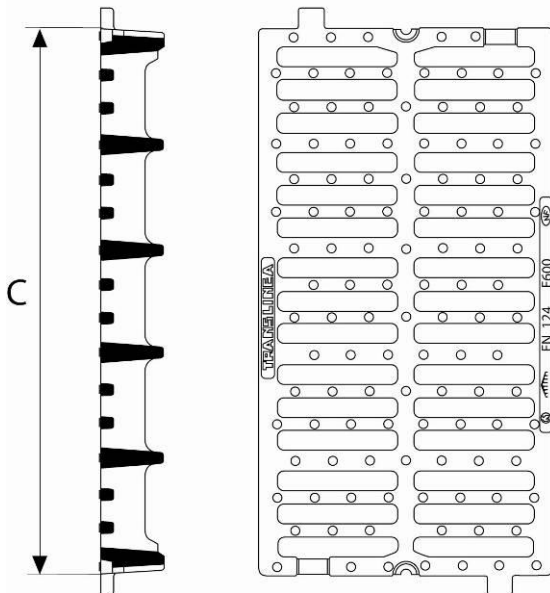
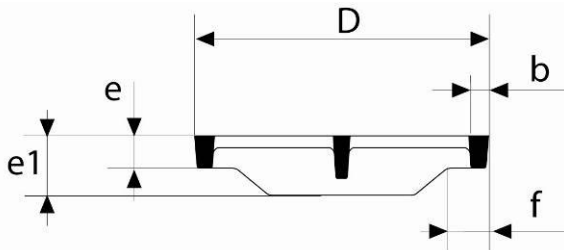


Channel grating TRANSLINEA
E600 class



Dimensions (mm)						Mass (kg)	Waterway area (dm ²)	Packaging	Reference
C	D	b	f	e	e1				
750	400	27	51	35	86	43.1	12.10	10	EETL40PF

Materials and coating:

Designation	Material	Coating
Frame and grating	Ductile iron EN GJS 400-15	Bituminous coating

Field of application:

- E600 class (Group 5) according to standard EN124, areas imposing high wheel loads, such as docks, port areas, aircraft pavements, etc...
- Channels which may be subject to crosswise traffic, for example crossing carriageway.

Mean features:

- Usable with a crosswise traffic (crossing carriageway).
- Protection against theft, cannot be dismantled without tool.
- Chaining devices between gratings.
- Securing the gratings to channel ensured by end pieces.

[\[Clic\]](#)

[\[Clic\]](#)

Implementation [\[Clic\]](#)

Help with the layout plan [\[Clic\]](#)