



Access Covers and Gratings

Reference OPT-EMAX LOCK KITS ISSUE No 2

OPT-EMAX LOCKING KITS  
RETRO FIT KITS  
(STANDARD & SCS)

Date 13/05/11

Scale N.T.S.

Drawn SPB

### MBU INFORMATION SHEET

## OPT-EMAX STANDARD TURNBUCKLE LOCK

PRODUCT CODE	DESCRIPTION
187097	100mm DEEP LOCKING KIT WITH KEY
187096	100mm DEEP LOCKING KIT
215624	150mm DEEP LOCKING KIT WITH KEY
215626	150mm DEEP LOCKING KIT
190664	LOCKING/LIFTING KEY (175mm LONG)
205435	LOCKING/LIFTING KEY (600mm LONG)

## OPT-EMAX HIGH SECURITY LOCK (SCS TYPE)

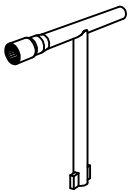
PRODUCT CODE	DESCRIPTION
215610	100mm DEEP LOCKING KIT WITH KEY
215622	100mm DEEP LOCKING KIT
215627	150mm DEEP LOCKING KIT WITH KEY
215628	150mm DEEP LOCKING KIT
C18	SCS KEY



**MBU INFORMATION SHEET**

See "Opt-Emax Lock Kits" & "Opt-Emax Lock" Information Sheets for Kits and fitting instructions

When fitted with SCS lock covers need std lifting keys.

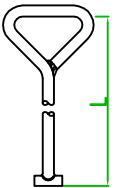


Locking/Lifting Key for Hex Head locked Units

- 190664 (RMA41) 175mm Long
- 205435 600mm Long

**USE LIFTING KEY(S):**

- 190668 (RMA57) 610mm LONG
- 190667 (RMA56) 467mm LONG
- 190666 (RMA55) 381mm LONG
- C50 (RMA62) 152mm LONG

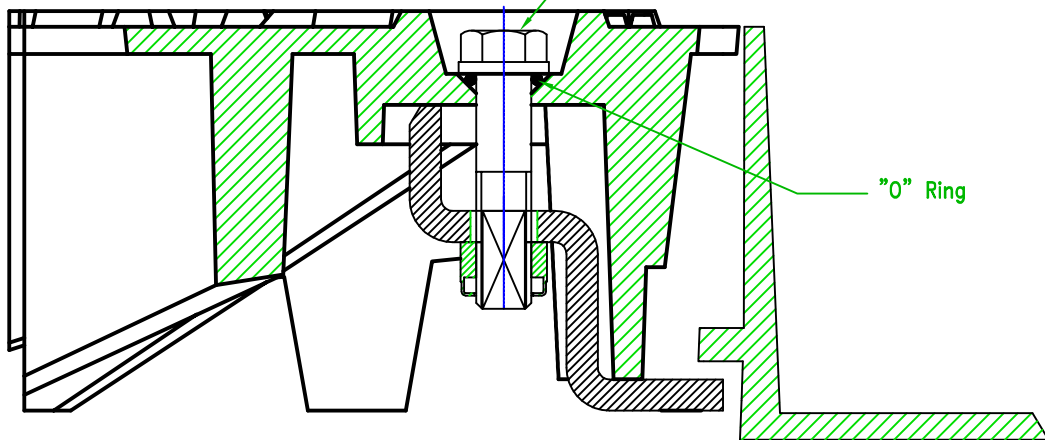


SCS Locking Key C18 (HM402)



Lock head, Hex type or SCS.

To operate the Lock – Hex head requires 19mm socket SCS requires C18 key



"O" Ring

Section through Opt-Emax lock, cover and frame.