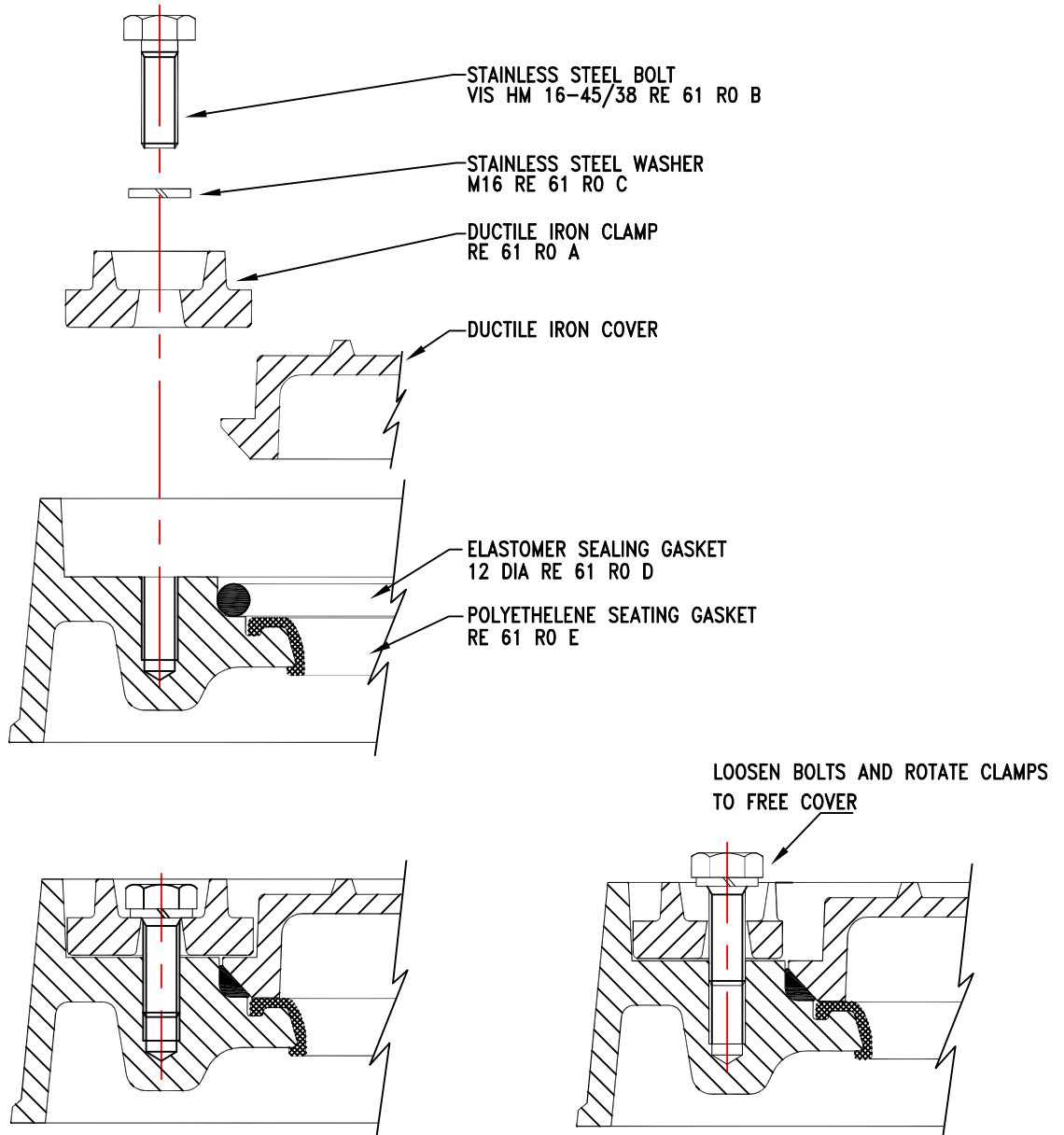


MBU INFORMATION SHEET

PAMTIGHT PRESSURE TIGHT (1 BAR)
SEALED COVER AND FRAME.
COMPONENTS AND INSTALLATION

| | |
|-------|----------|
| Date | 16/05/11 |
| Scale | N.T.S. |
| Drawn | R.Hall |



THE PAMTIGHT COVER AND FRAME SHOULD BE INSTALLED IN THE NORMAL WAY AS PER THE SITE INSTRUCTIONS SHOWN IN OUR PRODUCT CATALOGUE BUT THE ADDITIONAL POINTS DETAILED BELOW SHOULD ALSO BE NOTED.

THE PAMTIGHT FRAME SHOULD BE BOLTED DOWN WITH ANCHOR BOLTS OF A SIZE APPROPRIATE TO THE EXPECTED PRESSURE USING THE 4 - 22.5 x 20 HOLES PROVIDED ON A 740 PCD IN THE FRAME.

THE TYPE AND QUALITY OF EMBEDMENT MATERIAL SHOULD BE APPROPRIATE TO TRAFFIC LOADING AND EXPECTED PRESSURES.

COVER BOLTS SHOULD BE TIGHTENED SEQUENTIALLY AND PROGRESSIVELY IN DIAMETRICALLY OPPOSITE PAIRS TO ENSURE EVEN SEATING AND SEALING. WHEN REMOVING THE COVER, BOLTS SHOULD BE LOOSENED IN A SIMILAR MANNER TO PREVENT STRAIN.

TORQUE APPLIED SHOULD BE 80 Nm, USING A 24MM SPANNER OR SOCKET.

THE MANHOLE COVER SHOULD BE PROTECTIVELY COVERED PRIOR TO REINSTATEMENT OF THE SURROUNDING AREA TO ENSURE THAT BOLTS, BOLT POCKETS, CLAMPS AND LIFTING POCKETS ARE NOT BLOCKED OR FILLED WITH ROAD SURFACING MATERIAL.