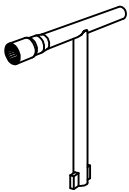


MBU INFORMATION SHEET

See "Opt-Emax Lock Kits" & "Opt-Emax Lock" Information Sheets for Kits and fitting instructions

When fitted with SCS lock covers need std lifting keys.

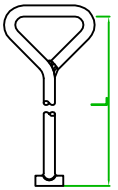


Locking/Lifting Key for Hex Head locked Units

- 190664 (RMA41) 175mm Long
- 205435 600mm Long

USE LIFTING KEY(S):

- 190668 (RMA57) 610mm LONG
- 190667 (RMA56) 467mm LONG
- 190666 (RMA55) 381mm LONG
- C50 (RMA62) 152mm LONG

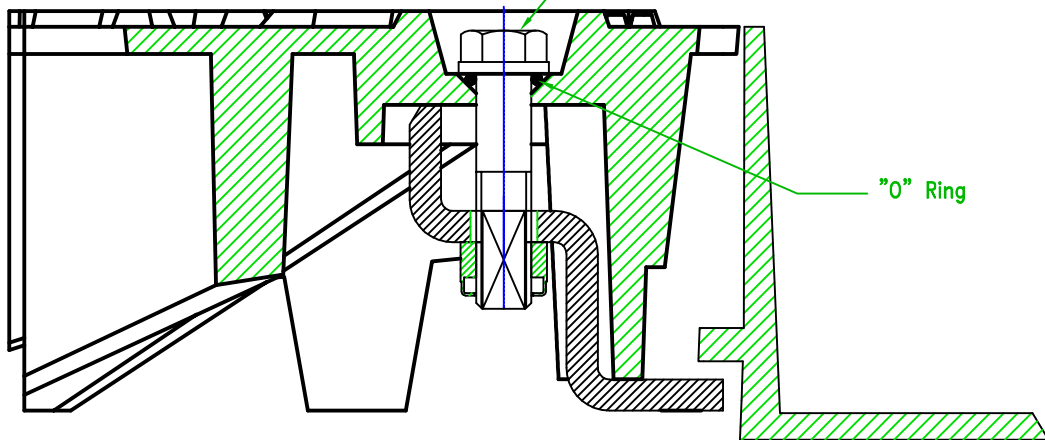


SCS Locking Key C18 (HM402)



Lock head, Hex type or SCS.

To operate the Lock – Hex head requires 19mm socket SCS requires C18 key



"O" Ring

Section through Opt-Emax lock, cover and frame.