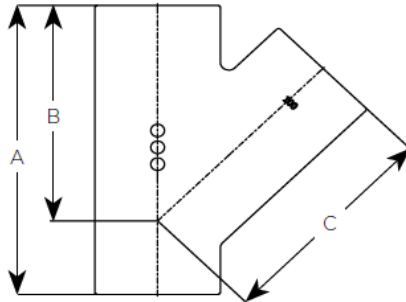


UNICLASS G5811: L7312	
Cl/Sfb	(52.5)
2019	

## EF006 – 45° Single Branch



Product code	Dia	A	B	C	WTKG
191467	50X50	185	135	135	1.3
191470	70X50	170	130	130	1.8
191473	70X70	200	145	150	2.3
191477	100X50	200	165	165	2.4
191480	100X70	215	170	170	2.7
191483	100X100	275	205	205	3.7
191488	125X70	225	185	185	4.0
191489	125X100	270	210	210	5.3
191491	125X125	305	230	230	5.6
191494	150X70	235	205	205	5.1
191495	150X100	295	240	240	5.7
191498	150X125	315	245	245	8.0
191500	150X150	355	265	265	8.4
191502	200X100	300	260	260	9.6
191503	200X150	375	300	300	14.2
191504	200X200	455	340	340	19.4
†157073	250X100	330	315	315	13.6
†157075	250X150	405	350	350	17.3
†157078	250X200	480	390	390	24.3
191507	250X250	560	430	430	32.2
†157138	300X100	350	345	345	19.3
†157140	300X150	415	380	380	23.2
†157141	300X200	485	415	440	28.4
†157142	300X250	580	465	465	37.2
191465	300X300	660	505	505	54.8
192339	400X300	660	555	565	60.0
192336	400X400	835	645	645	94.7
†192378	500X500	1020	790	790	175.0
†192379	600X600	1180	920	920	215.0

## General Description

45° Single Branch

† Available to order.

## CE Marking Certificate

## Technical Specification

- Product code:** See Table
- Standard:** BS EN 877: 1999/AC: 2008
- Material:** Cast Iron – BS EN 1561
- Coating:** Red epoxy to an average thickness of 70microns
- System Fire Rating:** A1
- Water Temperature Rating:** 95° +/- 2° (Resistance to Hot

Water in 24hr cycle constant)

1/9	0/6	0/9
DAY	MONTH	YEAR

Date of manufacture = 19th June 2009

## Product Identification

**CE**

SAINT-GOBAIN PAM UK  
Lows Lane  
Stanton-by-Dale - Ilkeston  
Derbyshire DE7 4QU  
08

Unique identification code of the product-type: E001A  
Declaration of Performance N°DoP-001UK  
AVCP: 3 for reaction to fire (Range)  
4 for all other characteristics

EN 877:1999/AC:2008  
Cast iron pipes and fittings, their joints and accessories  
for the evacuation of water from buildings

ENSIGN S (Soil) Range  
Pipes, fittings and couplings DN 50-600

Reaction to fire  
- Cast iron A1  
- Range A1

Internal pressure strength Conform  
Dimension tolerances Conform  
Impact resistance Conform

- Mechanical properties (pipes)  
• Tensile strength 300 MPa (average value)  
• Ring crush strength 450 MPa (average value)  
• Brinell hardness 220 HB (average value)

Tightness Conform  
- Water tightness \*  
Internal pressure  
DN ≤ 200 ≥ 5 bar  
DN > 200 ≥ 3 bar

\* excluded flexible couplings, joints connecting to sanitary ware ...)

Durability Conform  
- External coatings  
• Pipes Acrylic/Conform  
• Fittings Epoxy/Conform  
- Internal coatings  
• Pipes \*\* Epoxy/Conform  
• Fittings \*\* Epoxy/Conform  
\*\* including resistance to salt spray ≥ 1500 h

**Saint Gobain PAM**  
Lows Lane, Stanton-by-Dale  
Ilkeston, Derbyshire, DE7 4QU  
Sales : 0115 930 0630  
Technical T:01952 262 529 F: 01952 262 592  
E: technical.soildrain.uk.pam@saint-gobain.com



\* PLEASE NOTE: At the time this data sheet was prepared all the data shown was accurate at the time of release.