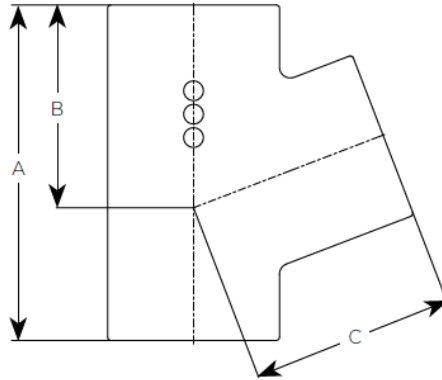
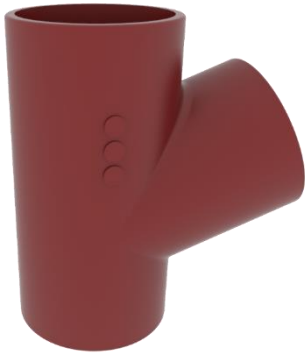


UNICLASS G5811: L7312		
Cl/Sfb		(52.5)
2019		

EF006 – 69° Single Branch

Product code	Dia	A	B	C	WTK G
191468	50X50	135	80	80	1.0
191471	70X50	145	90	90	1.4
191474	70X70	170	100	100	1.7
191478	100X50	155	100	110	2.2
191481	100X70	180	110	120	2.7
191484	100X100	215	130	130	2.7
191496	150X100	235	150	130	5.1



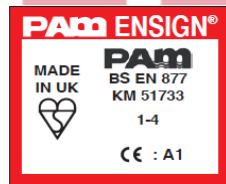
General Description

69° Single Branch


Technical Specification

- Product code:** See Table
- Standard:** BS EN 877: 1999/AC: 2008
- Material:** Cast Iron – BS EN 1561
- Coating:** Red epoxy to an average thickness of 70microns
- Component Fire Rating:** A1
- System Fire Rating:** A1
- Water Temperature Rating:** 95° +/- 2° (Resistance to Hot Water in 24hr cycle constant)

Product Identification



CE Marking Certificate

 SAINT-GOBAIN PAM UK Lows Lane Stanton-by-Dale - Ilkeston Derbyshire DE7 4QU 08	
Unique identification code of the product-type: E001A Declaration of Performance N°DoP-001UK AVCP: 3 for reaction to fire (Range) 4 for all other characteristics EN 877:1999/AC:2008 Cast iron pipes and fittings, their joints and accessories for the evacuation of water from buildings ENSIGN S (Soil) Range Pipes, fittings and couplings DN 50-600	
Reaction to fire - Cast iron - Range	A1 A1
Internal pressure strength	Conform
Dimension tolerances	Conform
Impact resistance	Conform
- Mechanical properties (pipes)	
• Tensile strength	300 MPa (average value)
• Ring crush strength	450 MPa (average value)
• Brinell hardness	220 HB (average value)
Tightness	Conform
- Water tightness *	
Internal pressure DN ≤ 200	≥ 5 bar
DN > 200	≥ 3 bar
* excluded flexible couplings, joints connecting to sanitary ware ...)	
Durability	Conform
- External coatings	
• Pipes	Acrylic/Conform
• Fittings	Epoxy/Conform
- Internal coatings	
• Pipes **	Epoxy/Conform
• Fittings **	Epoxy/Conform
** including resistance to salt spray ≥ 1500 h	