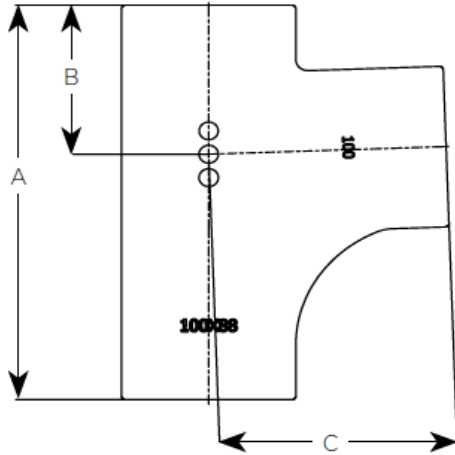
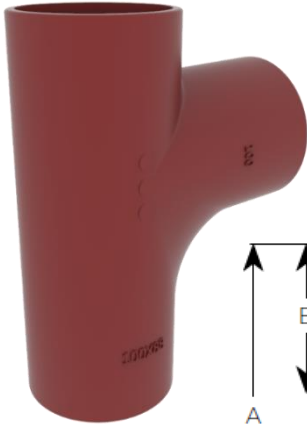



EF06R – 88° Single Branch Swept Radius



Product code	Dia	A	B	C	WTKG
156539	70X70	210	80	130	2.2
156611	100X50	204	90	120	2.4
156612	100X70	221	90	142	2.9
156696	100X100	270	102	150	3.3
156896	150X100	300	117	202	7.6
156926	150X150	400	140	260	11.7
156985	200X150	428	157	283	13.0
157025	200X200	478	182	293	21.0

CE Marking Certificate



SAINT-GOBAIN PAM UK
Lows Lane
Stanton-by-Dale - Ilkeston
Derbyshire DE7 4QU
08

Unique identification code of the product-type: E001A
Declaration of Performance N°DoP-001UK
AVCP: 3 for reaction to fire (Range)
4 for all other characteristics

EN 877:1999/AC:2008

Cast iron pipes and fittings, their joints and accessories
for the evacuation of water from buildings

ENSIGN S (Soil) Range
Pipes, fittings and couplings DN 50-600

Reaction to fire	
- Cast iron	A1
- Range	A1
Internal pressure strength	Conform
Dimension tolerances	Conform
Impact resistance	Conform
- Mechanical properties (pipes)	
• Tensile strength	300 MPa (average value)
• Ring crush strength	450 MPa (average value)
• Brinell hardness	220 HB (average value)
Tightness	Conform
- Water tightness *	
Internal pressure DN ≤ 200	≥ 5 bar
DN > 200	≥ 3 bar
* excluded flexible couplings, joints connecting to sanitary ware ...)	
Durability	Conform
- External coatings	
• Pipes	Acrylic/Conform
• Fittings	Epoxy/Conform
- Internal coatings	
• Pipes **	Epoxy/Conform
• Fittings **	Epoxy/Conform
** including resistance to salt spray	
	≥ 1500 h


General Description

88° Radius Single Branch


Technical Specification

- Product code:** See Table
- Standard:** BS EN 877: 1999/AC: 2008
- Material:** Cast Iron – BS EN 1561
- Coating:** Red epoxy to an average thickness of 70microns
- Component Fire Rating:** A1
- System Fire Rating:** A1
- Water Temperature Rating:** 95° +/- 2° (Resistance to Hot Water in 24hr cycle constant)


Product Identification



DAY



MONTH



YEAR

Date of manufacture = 19th June 2009

PAM ENSIGN®

MADE IN UK

PAM
BS EN 877
KM 51733
1-4

CE : A1

Saint Gobain PAM

Lows Lane, Stanton-by-Dale
Ilkeston, Derbyshire, DE7 4QU

Sales : 0115 930 0630

Technical T:01952 262 529 F: 01952 262 592

E: technical.soldrain.uk.pam@saint-gobain.com

* PLEASE NOTE: At the time this data sheet was prepared all the data shown was accurate at the time of release.

