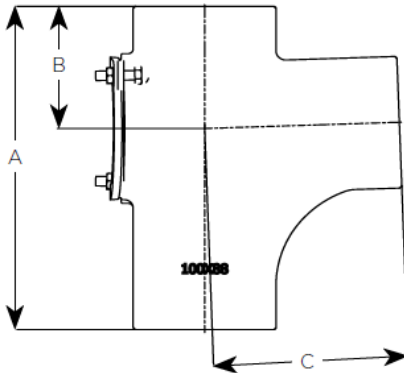


| | | |
|-----------------------|--|--------|
| UNICLASS G5811: L7312 | | |
| Cl/Sfb | | (52.5) |
| 2019 | | |

EF07R – 88° Radius Single Access Branch



| Product code | Dia | A | B | C | WTKG |
|--------------|---------|-----|-----|-----|------|
| 156540 | 70X70 | 210 | 80 | 130 | 3.0 |
| 156614 | 100X50 | 204 | 90 | 120 | 3.2 |
| 156621 | 100X70 | 221 | 90 | 142 | 3.5 |
| 156697 | 100X100 | 270 | 102 | 150 | 4.3 |
| 156875 | 150X100 | 300 | 117 | 202 | 8.9 |
| 156927 | 150X150 | 400 | 140 | 260 | 13.0 |

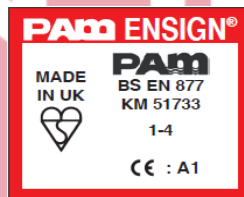
General Description

88° Radius Single Access Branch


Technical Specification

- Product code:** See Table
- Standard:** BS EN 877: 1999/AC: 2008
- Material:** Cast Iron – BS EN 1561
- Coating:** Red epoxy to an average thickness of 70microns
- Bolts:** Zinc & Clear Mild Steel Hex Head Bolts (M8)
- Nuts:** Zinc & Clear Mild Steel Hex Head Nuts (M8)
- Gasket Material:** EPDM Rubber EN 681
- Component Fire Rating:** A1
- System Fire Rating:** A1
- Water Temperature Rating:** 95° +/- 2° (Resistance to Hot Water in 24hr cycle constant)

Product Identification



CE Marking Certificate

| | |
|---|---|
|  SAINT-GOBAIN PAM UK Lows Lane Stanton-by-Dale - Ilkeston Derbyshire DE7 4QU 08 | |
| Unique identification code of the product-type: E001A Declaration of Performance N°DoP-001UK AVCP: 3 for reaction to fire (Range) 4 for all other characteristics EN 877:1999/AC:2008 | |
| Cast iron pipes and fittings, their joints and accessories for the evacuation of water from buildings ENSIGN S (Soil) Range Pipes, fittings and couplings DN 50-600 | |
| Reaction to fire - Cast iron - Range | A1 A1 |
| Internal pressure strength Dimension tolerances Impact resistance | Conform Conform Conform |
| - Mechanical properties (pipes) • Tensile strength • Ring crush strength • Brinell hardness | 300 MPa (average value) 450 MPa (average value) 220 HB (average value) |
| Tightness - Water tightness * Internal pressure DN ≤ 200 DN > 200 | Conform ≥ 5 bar ≥ 3 bar |
| * excluded flexible couplings, joints connecting to sanitary ware ... | |
| Durability - External coatings • Pipes • Fittings - Internal coatings • Pipes ** • Fittings ** | Conform Acrylic/Conform Epoxy/Conform Epoxy/Conform Epoxy/Conform ≥ 1500 h |
| ** including resistance to salt spray | |