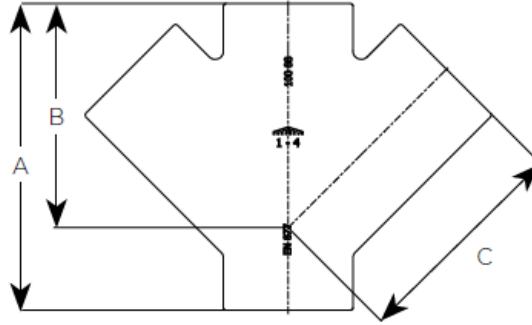


UNICLASS G5811: L7312	
Cl/Sfb	(52.5)
2019	

EF010 – 45° Double Branch



Product code	Dia	A	B	C	WTKG
191509	100X100	260	190	190	4.7
191512	150X100	280	225	225	8.0
191513	150X150	355	265	265	12.6
191514	200X200	455	340	340	25.3




General Description

45° Double Branch

Technical Specification

- Product code:** See Table
- Standard:** BS EN 877: 1999/AC: 2008
- Material:** Cast Iron – BS EN 1561
- Coating:** Red epoxy to an average thickness of 70microns
- Component Fire Rating:** A1
- System Fire Rating:** A1
- Water Temperature Rating:** 95° +/- 2° (Resistance to Hot Water in 24hr cycle constant)

CE Marking Certificate



SAINT-GOBAIN PAM UK
Lows Lane
Stanton-by-Dale - Ilkeston
Derbyshire DE7 4QU
08

Unique identification code of the product-type: E001A
Declaration of Performance N°DoP-001UK
AVCP: 3 for reaction to fire (Range)
4 for all other characteristics

EN 877:1999/AC:2008

Cast iron pipes and fittings, their joints and accessories
for the evacuation of water from buildings

ENIGNS S (Soil) Range
Pipes, fittings and couplings DN 50-600

Reaction to fire	
- Cast iron	A1
- Range	A1
Internal pressure strength	Conform
Dimension tolerances	Conform
Impact resistance	Conform
- Mechanical properties (pipes)	
• Tensile strength	300 MPa (average value)
• Ring crush strength	450 MPa (average value)
• Brinell hardness	220 HB (average value)
Tightness	Conform
- Water tightness *	
Internal pressure	
DN ≤ 200	≥ 5 bar
DN > 200	≥ 3 bar
* excluded flexible couplings, joints connecting to sanitary ware ...)	
Durability	Conform
- External coatings	
• Pipes	Acrylic/Conform
• Fittings	Epoxy/Conform
- Internal coatings	
• Pipes **	Epoxy/Conform
• Fittings **	Epoxy/Conform
** including resistance to salt spray	
	≥ 1500 h

Product Identification



1/9
DAY



0/6
MONTH




0/9
YEAR

Date of manufacture = 19th June 2009

PAM ENSIGN®

MADE IN UK


BS EN 877
KM 51733
 1-4
CE : A1

Saint Gobain PAM

Lows Lane, Stanton-by-Dale
Ilkeston, Derbyshire, DE7 4QU

Sales : 0115 930 0630

Technical T:01952 262 529 F: 01952 262 592

E: technical.soldrain.uk.pam@saint-gobain.com

* PLEASE NOTE: At the time this data sheet was prepared all the data shown was accurate at the time of release.

