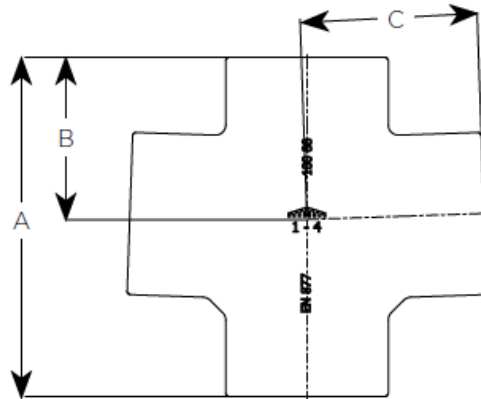


## EF010 – 88° Double Branch



Product code	Dia	A	B	C	WTKG
155825	100X50	170	76	105	2.2
155826	100X70	190	88	110	2.7
191511	100X100	220	105	115	3.3
155907	150X100	245	115	145	5.7



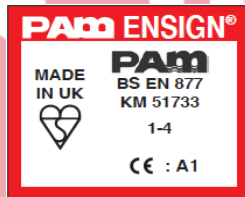
## General Description

88° Double Branch

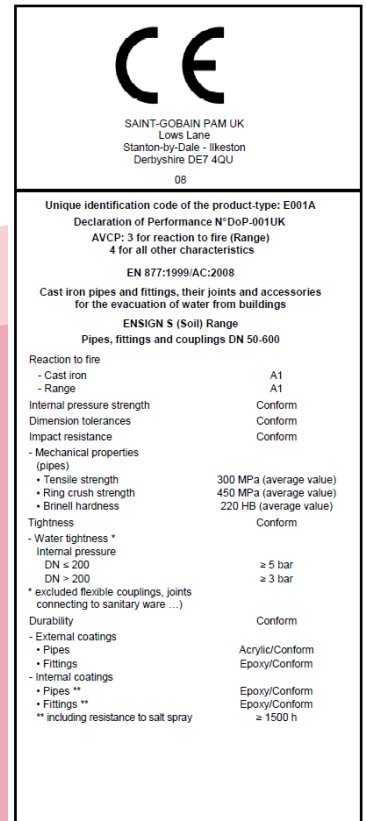
## Technical Specification

**Product code:** See Table  
**Standard:** BS EN 877: 1999/AC: 2008  
**Material:** Cast Iron – BS EN 1561  
**External Coating:** Red epoxy to an average thickness of 70microns  
**Component Fire Rating:** A1  
**System Fire Rating:** A1  
**Water Temperature Rating:** 95° +/- 2° (Resistance to Hot Water in 24hr cycle constant)

## Product Identification



## CE Marking Certificate



### Saint Gobain PAM

Lows Lane, Stanton-by-Dale  
 Ilkeston, Derbyshire, DE7 4QU

Sales : 0115 930 0630

Technical T:01952 262 529 F: 01952 262 592

E: technical.soldrain.uk.pam@saint-gobain.com

\* PLEASE NOTE: At the time this data sheet was prepared all the data shown was accurate at the time of release.

