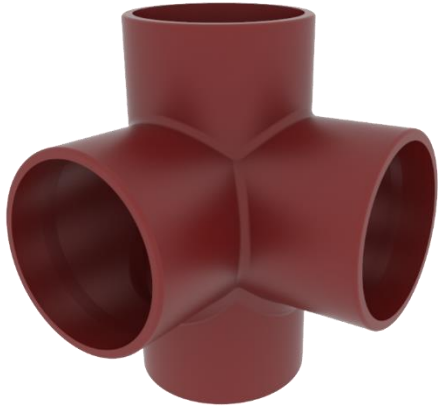
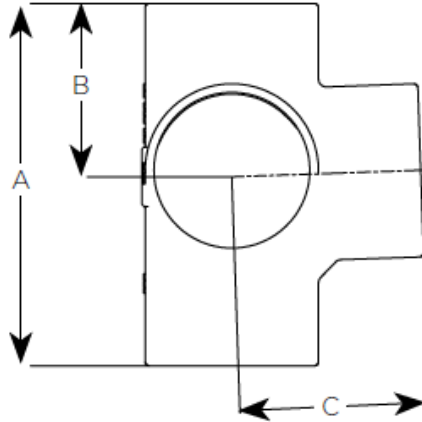


## EF035 – 88° Corner Tee Branch



Product code	Dia	A	B	C	WTKG
191558	100X100	220	105	115	3.5
155919	150X100	245	115	145	7.1



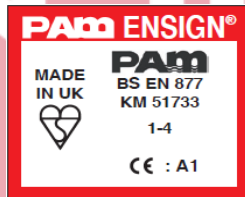
### General Description

88° Corner Branch

### Technical Specification

**Product code:** See Table  
**Standard:** BS EN 877: 1999/AC: 2008  
**Material:** Cast Iron – BS EN 1561  
**Coating:** Red epoxy to an average thickness of 70microns  
**Component Fire Rating:** A1  
**System Fire Rating:** A1  
**Water Temperature Rating:** 95° +/- 2° (Resistance to Hot Water in 24hr cycle constant)

### Product Identification



### CE Marking Certificate

**CE**

SAINT-GOBAIN PAM UK  
 Lows Lane  
 Stanton-by-Dale - Ilkeston  
 Derbyshire DE7 4QU  
 08

Unique identification code of the product-type: E001A  
 Declaration of Performance N°DoP-001UK  
 AVCP: 3 for reaction to fire (Range)  
 4 for all other characteristics

EN 877:1999/AC:2008

Cast iron pipes and fittings, their joints and accessories  
 for the evacuation of water from buildings

**ENIGNS S (Soil) Range**  
 Pipes, fittings and couplings DN 50-600

Reaction to fire	
- Cast iron	A1
- Range	A1
Internal pressure strength	Conform
Dimension tolerances	Conform
Impact resistance	Conform
- Mechanical properties (pipes)	
• Tensile strength	300 MPa (average value)
• Ring crush strength	450 MPa (average value)
• Brinell hardness	220 HB (average value)
Tightness	Conform
- Water tightness *	
Internal pressure	
DN ≤ 200	≥ 5 bar
DN > 200	≥ 3 bar
* excluded flexible couplings, joints connecting to sanitary ware ...)	
Durability	Conform
- External coatings	
• Pipes	Acrylic/Conform
• Fittings	Epoxy/Conform
- Internal coatings	
• Pipes **	Epoxy/Conform
• Fittings **	Epoxy/Conform
** including resistance to salt spray	
	≥ 1500 h