



RECOMMENDED USE:

The Double Radius Corner Branch is commonly used to service WC connections in corner Sanitary system applications.

The Corner Radius branch also conforms to the design guidance to use radius branches when servicing WC connection in BS 12056-2.

TECHNICAL SPECIFICATION:

STANDARD: BS EN 877: 1999/AC: 2008

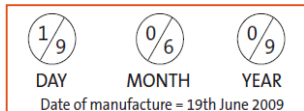
MATERIAL: Grey Iron – BS EN 1561

COATING: Red Epoxy at an average thickness of 70microns

SYSTEM FIRE RATING: A1

WATER TEMP RATING: 95° +/-2° (Resistance to Hot Water in 24hr cycle constant)

PRODUCT MARKINGS:



Manufacturing Date Codes



KITEMARK: KM 51733

1 - 4

Manufacturing Reference Code



Identification Label



Saint-Gobain PAM UK

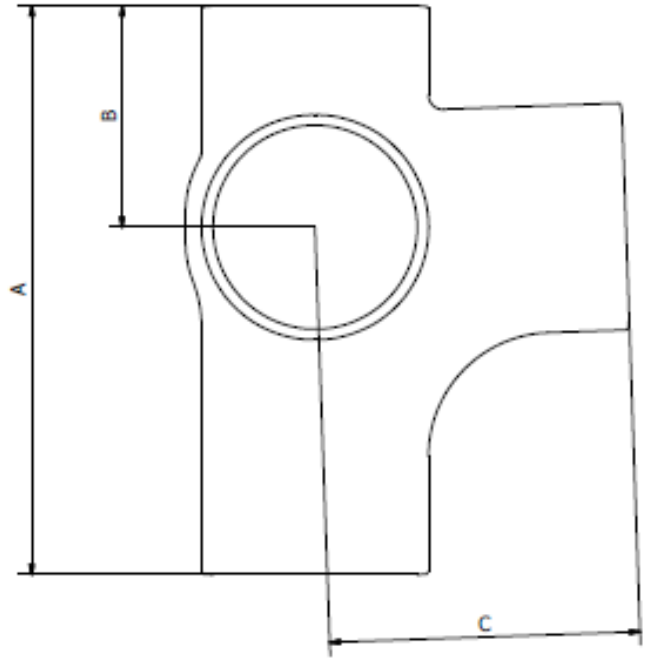
Tel: 0115 930 5000

www.saint-gobain-pam.co.uk

Email: technical.soildrain.uk.pam@saint-gobain.com

EF035R DOUBLE CORNER RADIUS BRANCH	ISSUE NO:	1	DATE:	25/07/18
------------------------------------	-----------	---	-------	----------

Manufactured in the UK to the highest Quality, Environmental and Health and Safety standards.



EF035R DOUBLE RADIUS CORNER BRANCH X 88°

SAP CODE	DIA	A	B	C	WEIGHT (kg)
264739	100 x 100	275	107	150	4.4