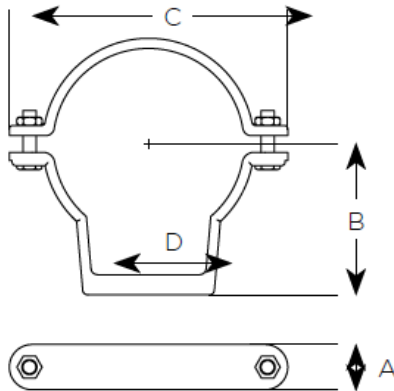


EF048 – Ductile Iron Bracket



Product code	Dia	A	B	C	WTKG
156408	50	27	64	110	0.3
156505	70	27	74	132	0.5
156646	100	27	90	166	0.6
156898	150	30	115	214	0.8
177745	200	35	150	266	1.6



General Description

Ductile Iron Two Piece Hanging Bracket

Technical Specification

- Prod code:** See Table
- Standard:** BS EN 877: 1999/AC: 2008
- Material:** Ductile Iron – (Grade 420) BS EN 877
- Coating:** Red Epoxy to an average thickness of 70microns
- Bolts:** 2 x Zinc & Clear Mild Steel Hex Head Bolts (M8)
- Nuts:** 2 x Zinc & Clear Mild Steel Hex Head Nuts (M8)
- System Fire Rating:** A1
- Water Temperature Rating:** 95° +/- 2° (Resistance to Hot Water in 24hr cycle constant)

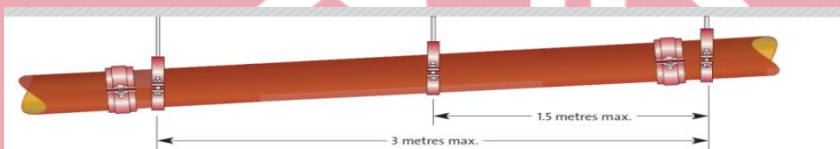
Acoustic Rating

Wastewater systems Ensign and EEZI-FIT – (100mm diameter) wall density 220kg/m²

Flow rate l/s	AIRBORNE SOUND			STRUCTURE BORNE		
	2.0	4.0	8.0	2.0	4.0	8.0
Ensign pipework fitted with two brackets – iron bracket EF048	45	48	54	27	32	34

Support Recommendations

Recommended Bracket Spacing: 2 per 3m Pipe. As advised in (BS EN 12056-2)



Recommended Threaded Rod sizes

Bracket diameter	50	70	100	125	150	200	250	300
Threaded rods (recommended)	M10	M10	M10	M10	M12	M12	M12 (x 2)	M12 (x 2)

Maximum recommended length of threaded rod is 1 metre for single drop EF048, two drops recommended over 1 metre EF049 type bracket. Lateral movement brace **may** be required for horizontal pipework at 6 metre spacing.

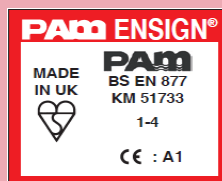
CE Marking Certificate

SAINT-GOBAIN PAM UK
Lows Lane
Stanton-by-Dale - Ilkeston
Derbyshire DE7 4QU
08

Unique identification code of the product-type: E001A
Declaration of Performance N°DoP-001UK
AVCP: 3 for reaction to fire (Range)
4 for all other characteristics
EN 877:1999/AC:2008
Cast iron pipes and fittings, their joints and accessories
for the evacuation of water from buildings
EN SIGN S (Soil) Range
Pipes, fittings and couplings DN 50-600

Reaction to fire	A1
- Cast iron	A1
- Range	A1
Internal pressure strength	Conform
Dimension tolerances	Conform
Impact resistance	Conform
- Mechanical properties (pipes)	
• Tensile strength	300 MPa (average value)
• Ring crush strength	450 MPa (average value)
• Brinell hardness	220 HB (average value)
Tightness	Conform
- Water tightness * Internal pressure	
DN ≤ 200	≥ 5 bar
DN > 200	≥ 3 bar
* excluded flexible couplings, joints connecting to sanitary ware ...)	
Durability	Conform
- External coatings	
• Pipes	Acrylic/Conform
• Fittings	Epoxy/Conform
- Internal coatings	
• Pipes **	Epoxy/Conform
• Fittings **	Epoxy/Conform
** including resistance to salt spray	
	≥ 1500 h

Saint Gobain PAM
Lows Lane, Stanton-by-Dale
Ilkeston, Derbyshire, DE7 4QU
Sales : 0115 930 0630
Technical T:01952 262 529 F: 01952 262 592
E: technical.soildrain.uk.pam@saint-gobain.com



BS EN 9001:2008
Registered No:
FM12908

