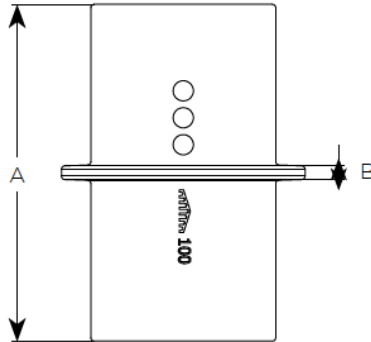


## EF050 – Stack Support Pipe



Product code	Dia	A	B	C	WTKG
191856	70	220	8	58	1.8
191562	100	220	8	58	2.8
191563	125	220	8	58	3.6
191564	150	220	8	58	4.8
*157014	200	220	8	80	10.0
*157097	250	300	8	82	18.5
*157160	300	300	8	82	30.8

\*Complete with bracket & gasket EF051



## CE Marking Certificate



SAINT-GOBAIN PAM UK  
Lows Lane  
Stanton-by-Dale - Ilkeston  
Derbyshire DE7 4QU  
08

Unique identification code of the product-type: E001A  
Declaration of Performance N°DoP-001UK  
AVCP: 3 for reaction to fire (Range)  
4 for all other characteristics

EN 877:1999/AC:2008

Cast iron pipes and fittings, their joints and accessories  
for the evacuation of water from buildings

ENSIGN S (Soil) Range

Pipes, fittings and couplings DN 50-600

Reaction to fire	
- Cast iron	A1
- Range	A1
Internal pressure strength	Conform
Dimension tolerances	Conform
Impact resistance	Conform
- Mechanical properties (pipes)	
• Tensile strength	300 MPa (average value)
• Ring crush strength	450 MPa (average value)
• Brinell hardness	220 HB (average value)
Tightness	Conform
- Water tightness * internal pressure	
DN ≤ 200	≥ 5 bar
DN > 200	≥ 3 bar
* excluded flexible couplings, joints connecting to sanitary ware ...)	
Durability	Conform
- External coatings	
• Pipes	Acrylic/Conform
• Fittings	Epoxy/Conform
- Internal coatings	
• Pipes **	Epoxy/Conform
• Fittings **	Epoxy/Conform
** including resistance to salt spray	
	≥ 1500 h

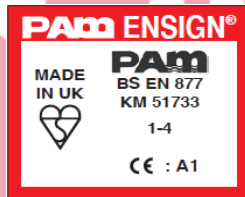
## General Description

Stack Support Pipe

## Technical Specification

<b>Product code:</b>	See Table
<b>Standard:</b>	BS EN 877: 1999/AC: 2008
<b>Material:</b>	Cast Iron – BS EN 1561
<b>Coating:</b>	Red epoxy to an average thickness of 70microns
<b>Component Fire Rating:</b>	A1
<b>System Fire Rating:</b>	A1
<b>Water Temperature Rating:</b>	95° +/- 2° (Resistance to Hot Water in 24hr cycle constant)

## Product Identification



### Saint Gobain PAM

Lows Lane, Stanton-by-Dale  
Ilkeston, Derbyshire, DE7 4QU

Sales : 0115 930 0630

Technical T:01952 262 529 F: 01952 262 592

E: technical.soldrain.uk.pam@saint-gobain.com

\* PLEASE NOTE: At the time this data sheet was prepared all the data shown was accurate at the time of release.

