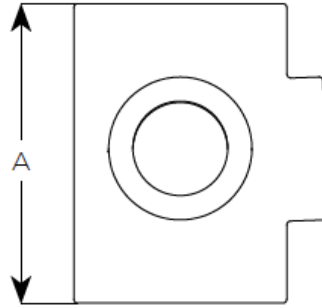


EF092T – Double 90° Boss pipe



| Product code | Dia | A | WTKG |
|--------------|-----|-----|------|
| 245545 | 70 | 146 | 1.4 |
| 191850 | 100 | 155 | 2.0 |



50mm BSPT
bosses.

CE Marking Certificate



SAINT-GOBAIN PAM UK
Lows Lane
Stanton-by-Dale - Ilkeston
Derbyshire DE7 4QU
08

Unique identification code of the product-type: E001A
Declaration of Performance N°DoP-001UK
AVCP: 3 for reaction to fire (Range)
4 for all other characteristics

EN 877:1999/AC:2008

Cast iron pipes and fittings, their joints and accessories
for the evacuation of water from buildings

ENSIGN S (Soil) Range

Pipes, fittings and couplings DN 50-600

| | |
|--|-------------------------|
| Reaction to fire | |
| - Cast iron | A1 |
| - Range | A1 |
| Internal pressure strength | Conform |
| Dimension tolerances | Conform |
| Impact resistance | Conform |
| - Mechanical properties (pipes) | |
| • Tensile strength | 300 MPa (average value) |
| • Ring crush strength | 450 MPa (average value) |
| • Brinell hardness | 220 HB (average value) |
| Tightness | Conform |
| - Water tightness * | |
| Internal pressure | |
| DN ≤ 200 | ≥ 5 bar |
| DN > 200 | ≥ 3 bar |
| * excluded flexible couplings, joints connecting to sanitary ware ...) | |
| Durability | Conform |
| - External coatings | |
| • Pipes | Acrylic/Conform |
| • Fittings | Epoxy/Conform |
| - Internal coatings | |
| • Pipes ** | Epoxy/Conform |
| • Fittings ** | Epoxy/Conform |
| ** including resistance to salt spray | |
| | ≥ 1500 h |

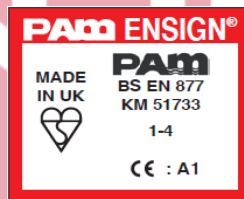
General Description

Double 90° Drilled & Tapped 2" BSPT Boss Pipe

Technical Specification

| | |
|----------------------------------|---|
| Product code: | See Table |
| Standard: | BS EN 877: 1999/AC: 2008 |
| Material: | Cast Iron – BS EN 1561 |
| Coating: | Red epoxy to an average thickness of 70microns |
| Thread: | 2" BSPT Thread |
| Component Fire Rating: | A1 |
| System Fire Rating: | A1 |
| Water Temperature Rating: | 95° +/- 2° (Resistance to Hot Water in 24hr cycle constant) |

Product Identification



Saint Gobain PAM

Lows Lane, Stanton-by-Dale
Ilkeston, Derbyshire, DE7 4QU

Sales : 0115 930 0630

Technical T:01952 262 529 F: 01952 262 592

E: technical.soldrain.uk.pam@saint-gobain.com

* PLEASE NOTE: At the time this data sheet was prepared all the data shown was accurate at the time of release.