

Grating MECALINEA C250

Dimensions of concrete channels.

1. General points :

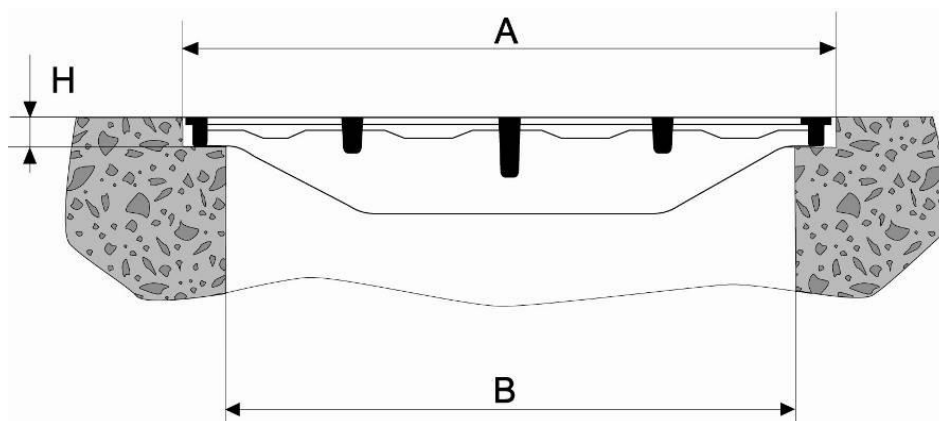
The AUTOLINEA C250 gratings can be posed on channels having a rebate realized directly in concrete, maybe with steel angle fittings or T section frames.

It's possible to cut the gratings in end of the channels to obtain the desired useful length.

2. Installation on the concrete rebate :

Planarity between edges 3 mm and linearity 2 mm.

Concrete strength ≥ 10 MPa



Grating MECALINEA (mm)	A (mm)	B maxi (mm)	H (mm)
750 x 200	206 ± 2	140	27 ± 3
750 x 250	256 ± 2	190	27 ± 3
750 x 300	306 ± 2	240	27 ± 3
750 x 350	356 ± 2	290	27 ± 3
750 x 400	406 ± 2	340	27 ± 3
750 x 500	508 ± 3	440	27 ± 3
750 x 600	608 ± 3	540	27 ± 3
750 x 700	708 ± 3	640	27 ± 3

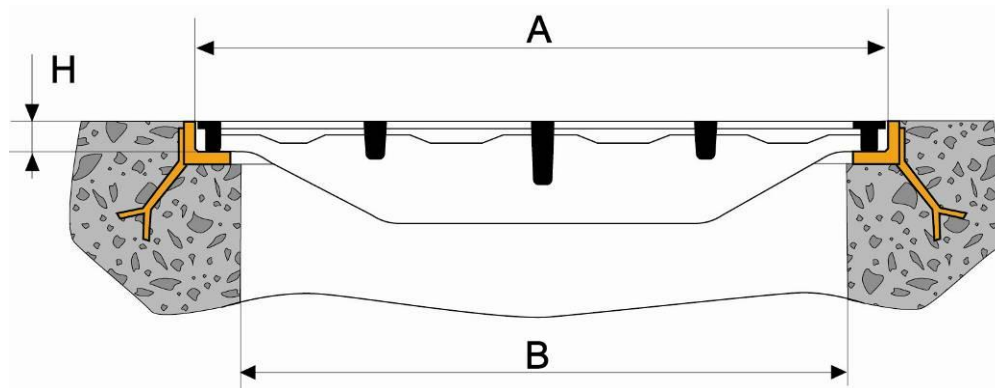
3. Implementation on angle fittings:

Angle fittings with equal wings 30 x 30 ep. 3 in galvanized A33 steel.

To plan anchoring legs all 2m.

Planarity between edges 3 mm and linearity 2 mm.

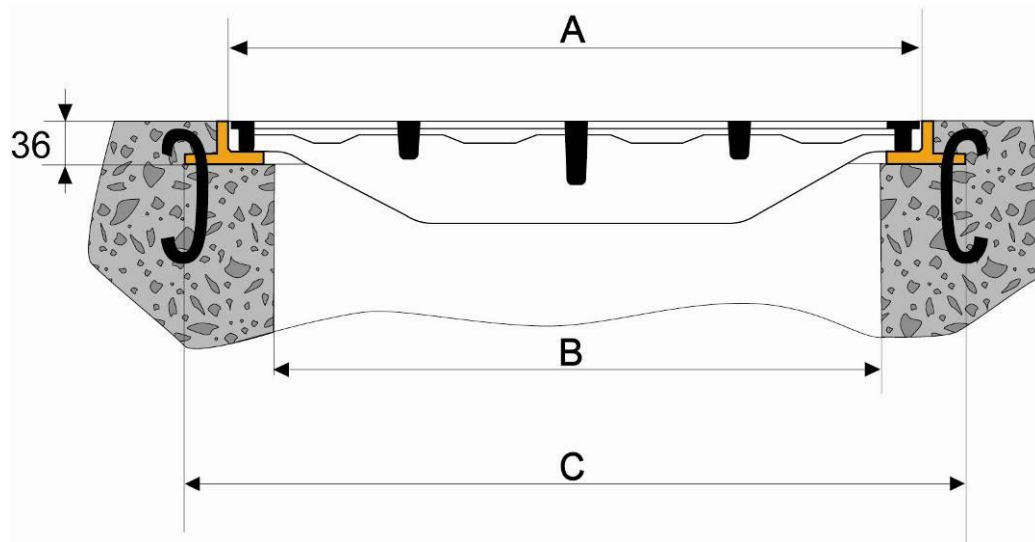
Concrete strength ≥ 10 MPa.



Grating MECALINEA (mm)	A (mm)	B maxi (mm)	H (mm)
750 x 200	207 ± 2	170	27
750 x 250	257 ± 2	220	27
750 x 300	307 ± 2	270	27
750 x 350	277 ± 2	320	27
750 x 400	407 ± 2	340	27
750 x 500	509 ± 3	440	27
750 x 600	609 ± 3	540	27
750 x 700	709 ± 3	640	27

4. Implementation on T section frames:

Use of T section frames of 750 mm: *reference E5* [\[Clic\]](#)



T section frames with planarity between edges 3 mm and linearity 2 mm
Concrete strength ≥ 10 MPa

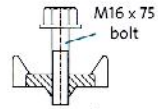
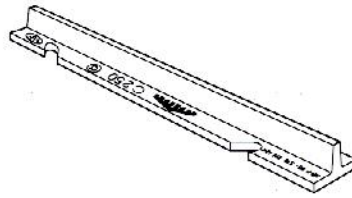
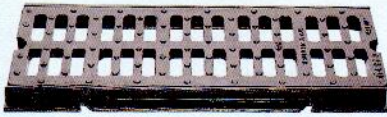
Grating MECALINEA (mm)	A (mm)	B maxi (mm)	C (mm)
750 x 200	207 ± 2	140	275
750 x 250	257 ± 2	190	325
750 x 300	307 ± 2	240	375
750 x 350	357 ± 2	290	425
750 x 400	407 ± 2	340	475
750 x 500	509 ± 3	440	575
750 x 600	609 ± 3	540	675
750 x 700	709 ± 3	640	775

Installation

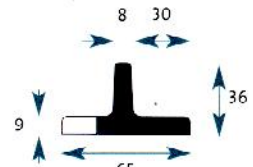
Channel grating

Mecalinea installation

Components



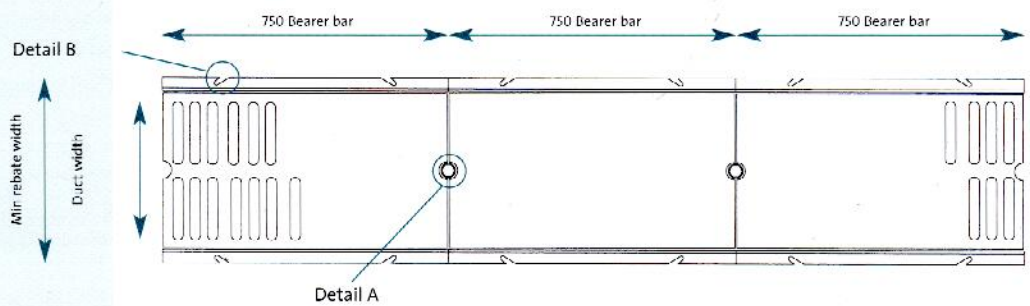
Connecting piece
RE 30 H3 ED
E6



Bearer bar
RE 30 H3 GD (750 long)
E5

Installation

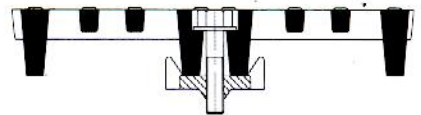
Mecalinea grates should preferably be installed using the specially designed bearer bars and with the gratings joined together using the connecting pieces where used in cross traffic areas.



Typical layout for heavy use and areas subject to slow-moving traffic.

Detail A

Grating connected to grating (must be used if subject to cross traffic).



Detail B

Bearer bar seating.

